

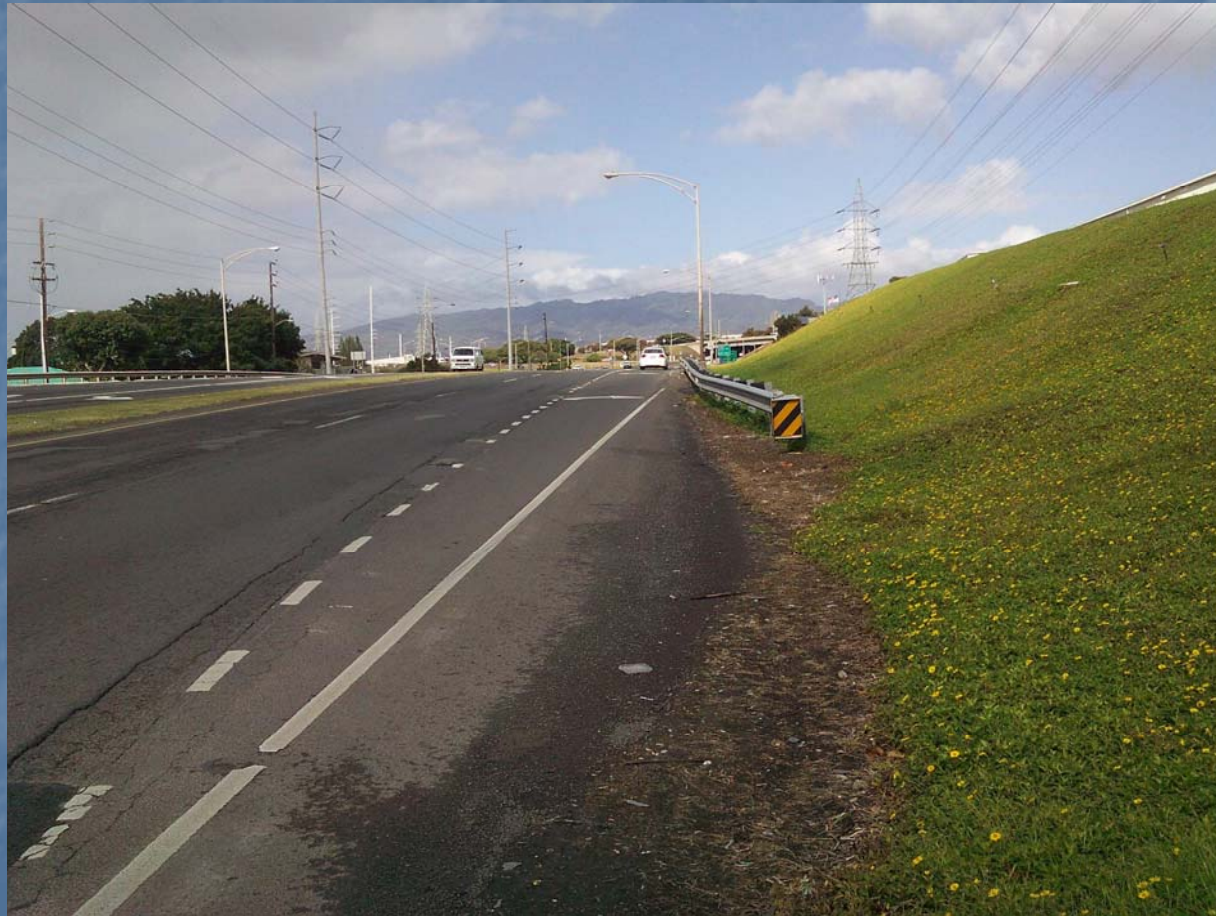


# Aiea – Pearl City Town Meeting

Transportation Update  
Department of Transportation Services  
City & County of Honolulu

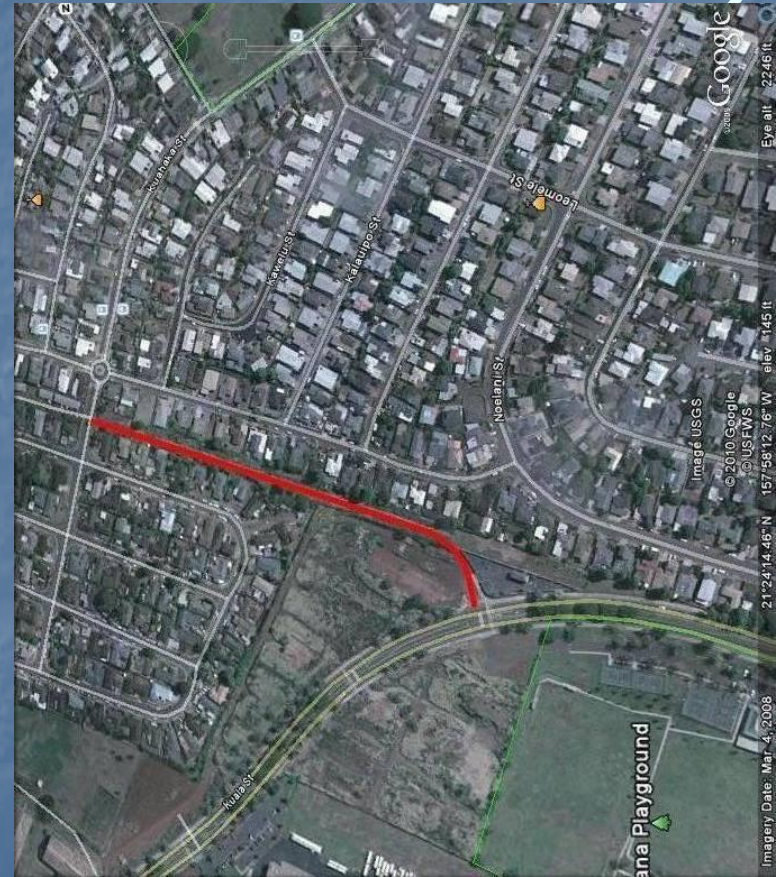
March 18, 2010

# Moanalua Road Freeway Onramp Auxiliary Lane



# Manana Infrastructure Improvements – Phase VI Connector Road (Kuahaka to Kuala)

NTP issued: Dec '09  
Cost: \$3.2 M  
Duration: 13 months



# Rehab of Streets (DDC)

## Unit 51 (Advertise Bids: Jul 2010)

Kaahumanu St	Kamehameha Hwy	to	Moanalua Rd
Kaahumanu St	Moanalua Rd	to	Mauka End
Moanalua Rd	Kaahumanu St	to	Pali Momi

## Unit 55 (Advertise Bids: Jul 2010)

Hapaki St	Piki St (mauka intersec)	to	Nahele St
Hoohiki St	Noelani St	to	Komo Mai Drive
Hoomalu St	435 Hoomalu St	to	Komo Mai Drive
Kaahele St	Moanalua Rd	to	Mauka End
Nahele St	Komo Mai Drive	to	Hapaki St



# Rehab of Streets (DDC)

For residential/secondary streets not on buslines  
\$10.0 M – FY09 funds

## Unit 4 (Cold planing and paving complete)

Pearl City, Waiiau, Newtown, Royal Summit, Pearlridge, Aiea Kai, Aiea ,  
Aiea Hts, and Halawa Hts

## Unit 4(begin Jan 18)

Halawa Hts-

Halawa Drive and adjoining Streets

Lalawai Drive and adjoining Streets



## ■ 1st Group

Iwaiwa Street

Hukaa Street

Pohue Street

Nakui Street

Kahema Pl

Kaholi Pl

Lalawai Dr

Puawa Pl

Malae Pl

Haaheo Pl

Halawa Dr

Puumakani St

Waoala Pl

Kekoa Pl

Kealaluina Dr

Poko Pl

**Poko Rd**



## ■ 2<sup>nd</sup> Group

Paihi St

Honohina St

Pualaa St

Hokea St

Pohuli St

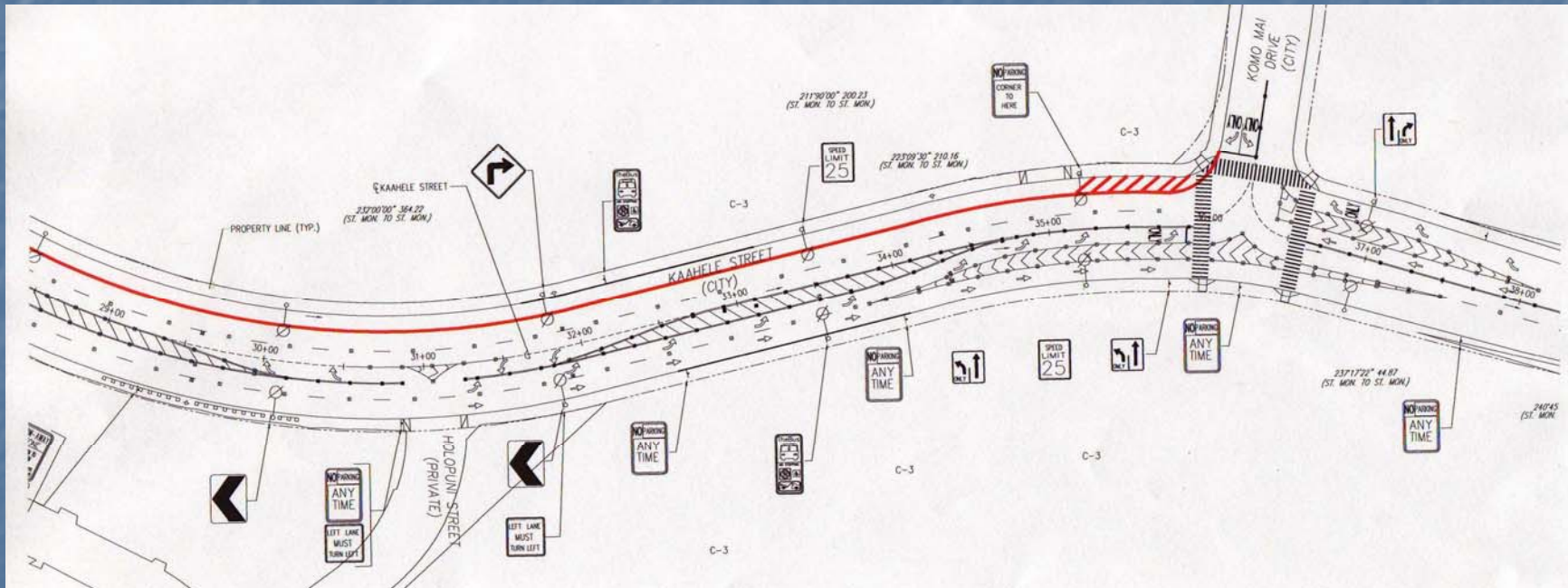
Alia Pl

Huakanu Pl





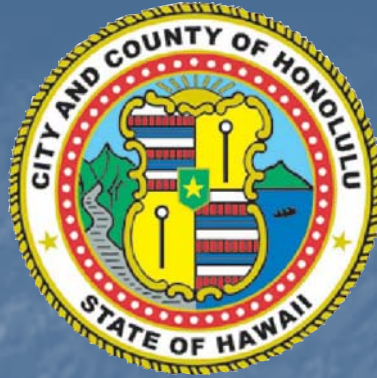
# Kaahele Street Restriping



# Pothole Patrol

# 768-7777





# Mahalo

## Questions or Comments?

Mark Kikuchi

768-8337

[mkikuchi1@honolulu.gov](mailto:mkikuchi1@honolulu.gov)



Dept. of Trans. Services

Kamehameha Hwy Task Force